
MGRM | RAINBOW SUPPORT SERVICE

DAR il-QAWSALLA

WHO ARE WE?

Colette Farrugia Bennett (Rainbow Support Service)

Alex Caruana (MGRM)





HOME MISSION

Providing a safe environment for LGBTIQ individuals, couples and/ or families for a temporary period as independent living whilst creating a community service for non-residents.

WHO WILL BENEFIT

Adults as residents, who might have disabilities.
LGBTIQ clients who need community support
Professionals or groups who wish to engage in training

OUTLINE OF ESSENTIAL SERVICES IN THE HOME

Accessibility

Environmental Sustainability

Security

Separation of community services and
residential services

Safe therapeutic space



FRONT PORCH

FIRST STEP INTO THE HOME

Other than being a front porch this will also serve as a waiting area for people who will be coming for sessions and are non-residents. Also, if we have any events whereby a number of people (including young people), this could also serve as a communal space where games could be played etc.

Tapping on how green spaces help with mental health, this front porch is envisioned to provide such an environment for the neighbourhood as well.

Construct a secondary entrance to the therapy room



Therapy Room

Essentials

Secondary entrance

Splitting of room for one way mirror and storage room

Audio and Camera for FT trainees

Space for two seater sofa and three armchairs

Shelving

Multiple socket outlets and points for ACs

Ethernet network cables

Network for projector

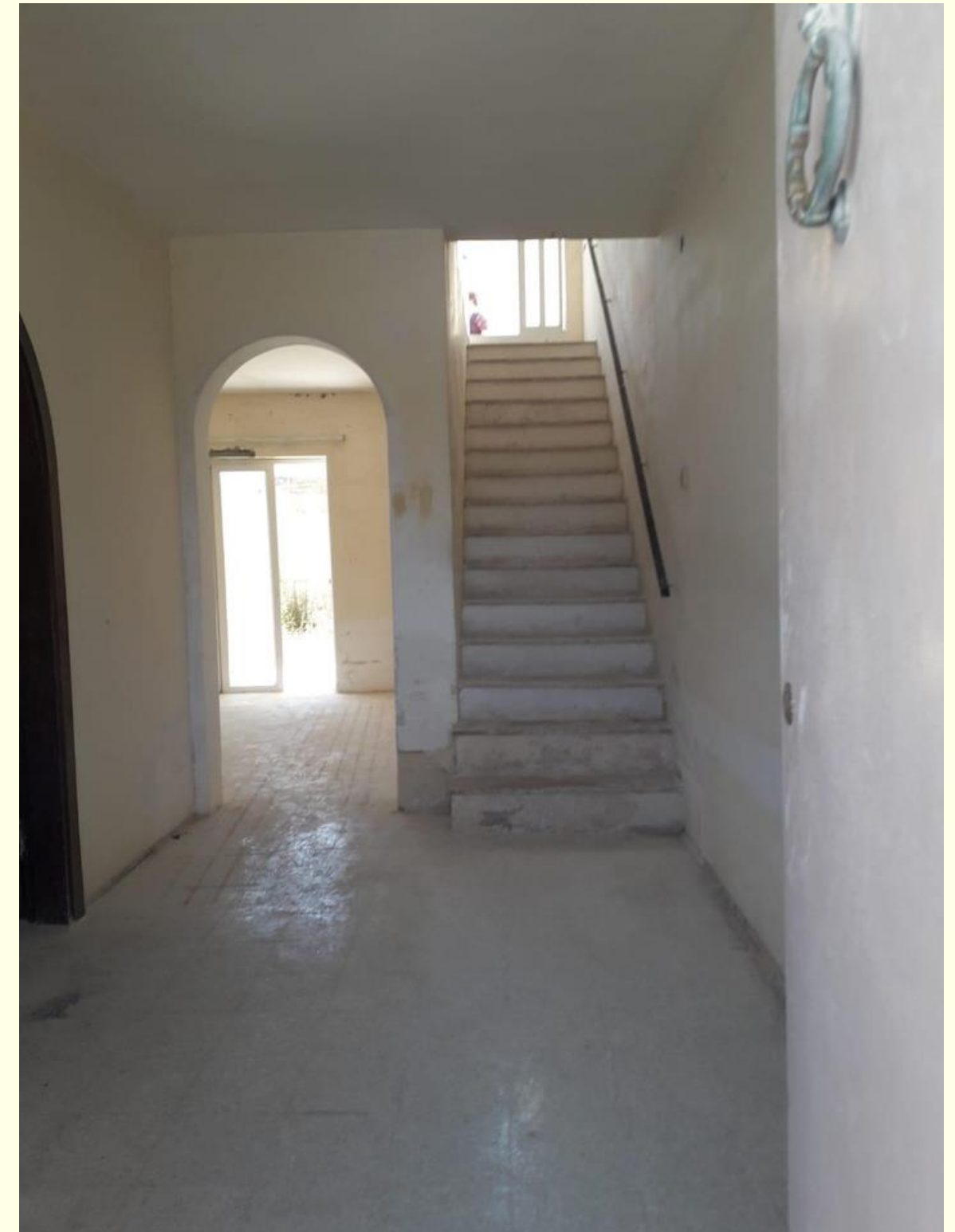
Can be also used for trainings

Sound proof

HALLWAY/GROUND FLOOR

LIBRARY

MGRM possess a public library for LGBTIQ related books which is unique to Malta. This will transferred to Dar il-Qawsalla and we believe that this could be placed in the common area between non-residents and residents. Thus being accessible to all, such library would require a lock in order to be secure.



GROUND FLOOR

WAITING AREA / COMMUNAL AREA FOR NON RESIDENTS

Being a community home, we need to have a relaxing, safe and welcoming environment for non-residents as well. This will be next to the professionals' office and will serve as a waiting area for sessions or training. It will also be a space where groups (including adolescents) might meet for activities such as a cinema nights etc. Thus, cables for a projector, internet and cameras need to be established in this space. In case of training sessions, this space needs to be adequate for folding tables and chairs. Storage for such is needed.

Office & Lift

Essentials

Security of office

Lift to access all levels of the house

Access to yard from office - changing

window to door and vice-versa

Window from office accessing common

area, with sound proofing.

Adequate storage for administration files

Socket outlets and ethernet cables

Two desk chairs in office

Two arm chairs and coffee table (for short

sessions or groups with residents)



YARD



**GREEN WALL,
AC WATER TO BE COLLECTED,
ENLARGE PATIO, REDUCE
PATCH, BENCHES,
WHEELCHAIR ACCESSIBLE**

COMMUNAL BATHROOM

ACCESIBLE TOILET, SHOWER AND SINK
ELECTRIC HEATER
WASHING MACHINE

KITCHENETTE

CORRIDOR AREA LEADING TO THE BATHROOM
CABINETTE
SINK
SMALL OVEN AND ELECTRIC COOKER





STAIRCASE

THIS WILL BE THE
ONLY
SEPARATION
BETWEEN THE
NON-
RESIDENTIAL AND
RESIDENTIAL



SECURITY

DOOR ON THE TOP OF THE STAIRS WHICH IS LOCKABLE

FIRST FLOOR

DORMITORIES

3 ENSUITE ROOMS WITH PRIVATE DOOR EACH

NETWORK CABLES IN EACH ROOM

ROOMS NEED TO BE ACCESSIBLE

CAN HOST UP TO 2 PEOPLE PER ROOM, WHICH

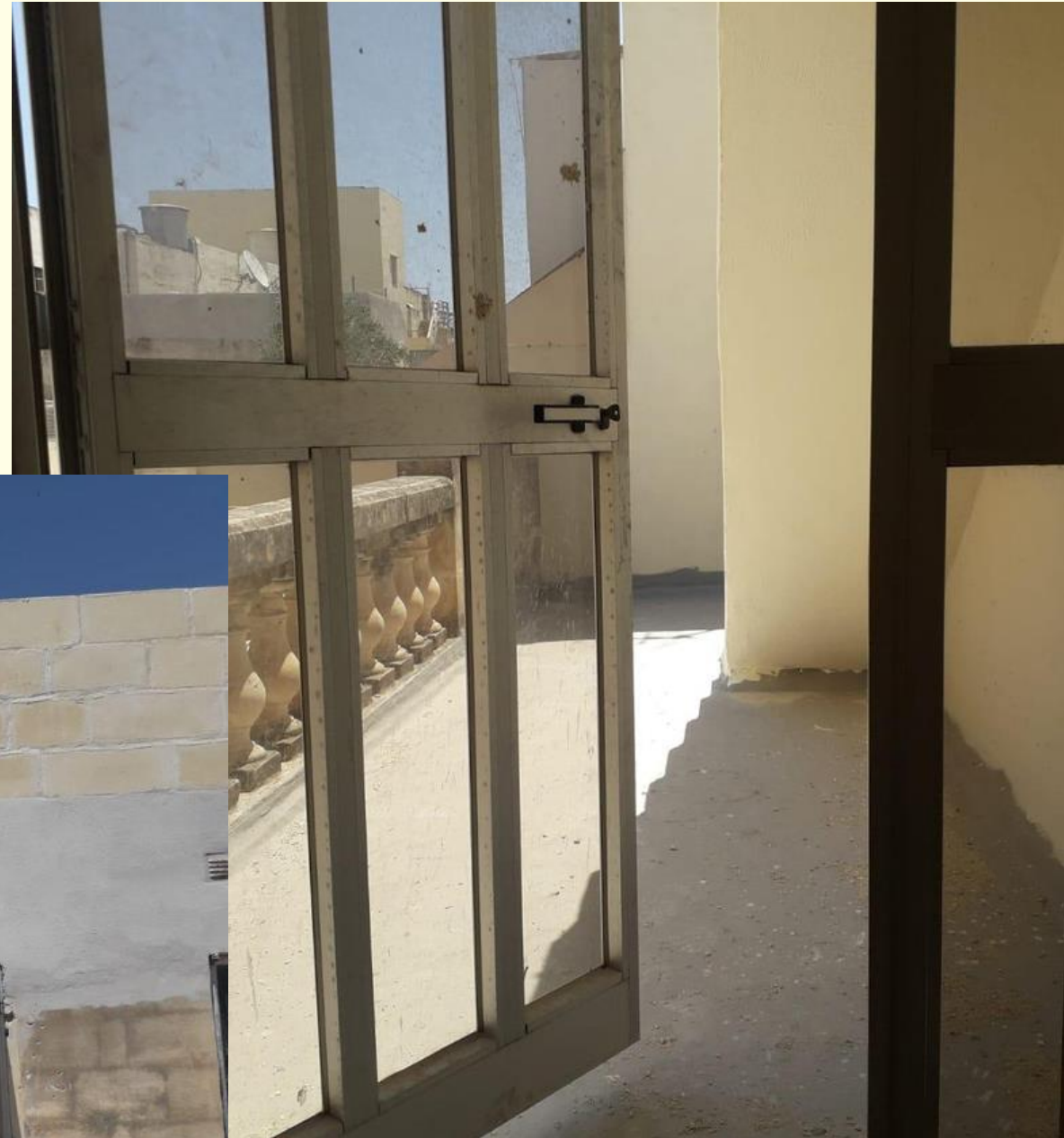
CAN INCLUDE FAMILIES

BALCONY IN EACH ROOM

ELECTRIC METER IN EACH ROOM



FIRST FLOOR



STAIRCASE

STAIR CASE TO SECOND FLOOR NEEDS TO BE PLACED ON THE INSIDE NOT OUTSIDE FOR ACCESSIBILITY TO KITCHEN AND DINING ROOM.

PLACE FOR STORAGE

IN THIS AREA AND ENLARGE THE AREA ON THE OUTSIDE WHICH CAN BE USED TO HANG CLOTHES

SECOND FLOOR

KITCHEN



DINING



ROOF GARDEN



SPACE FOR
SOLAR PANELS



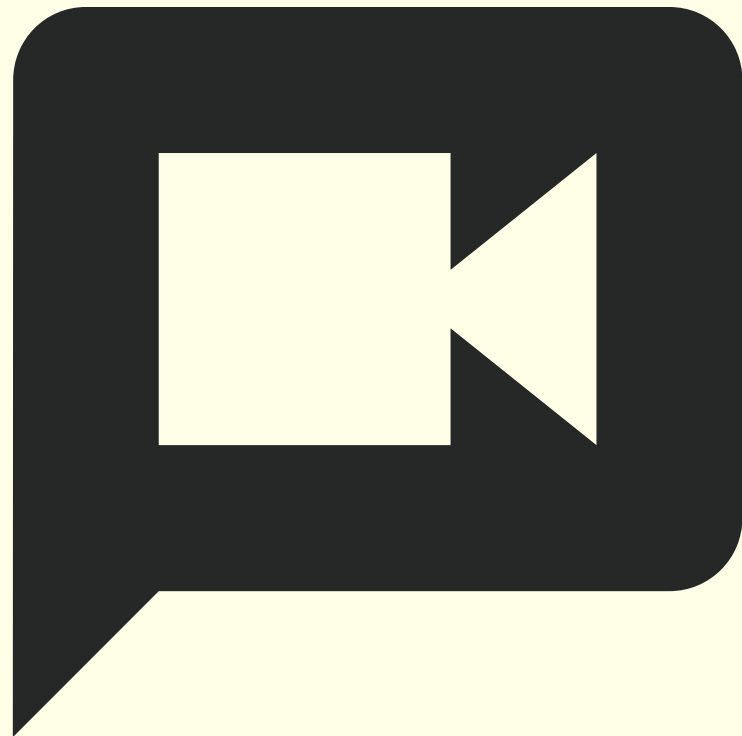
WHILST PROVIDING A COMMUNAL SPACE FOR RESIDENTS, A WELCOMING AND COMFORTABLE ENVIRONMENT NEEDS TO BE PORTRAYED. A WASHING MACHINE NEEDS TO BE INSTALLED IN THE KITCHEN FOR THE CLIENTS' PURPOSES.

INTERNET AND TV CABLES NEEDED IN THIS SPACE
ROOF GARDEN TO PROMOTE HEALTHY MENTAL HEALTH AND COLLECTION OF RAIN WATER IS TO BE ENCOURAGED

SECURITY

CCTV CAMERAS IN;

- HALLWAYS
- CORRIDOR
- KITCHENS (TOP FLOOR AND KITCHENETTE)
- COMMON AREAS (GF AND SECOND FLOOR)
- LIBRARY
- FRONT OF HOUSE
- YARD



ESSENTIALS FOR THE HOME

AC and water heaters in each room/ensuite

AC unit in second floor in kitchen

AC in therapy room, office room and common room in GF

Water heater in kitchen and living room

Ethernet cables and WIFI

Water tank big enough for all bathrooms and kitchens

Solar panels

Double Glazing throughout house and insulation where necessary

SINCE THE HOUSE WILL BE RUN BY MGRM, RUNNING COSTS NEED TO BE REDUCED AND SUSTAINABILITY IS ENCOURAGED

Thank you!

Contact |

mgrm@maltagayrights.org

99255559